

CP5-900

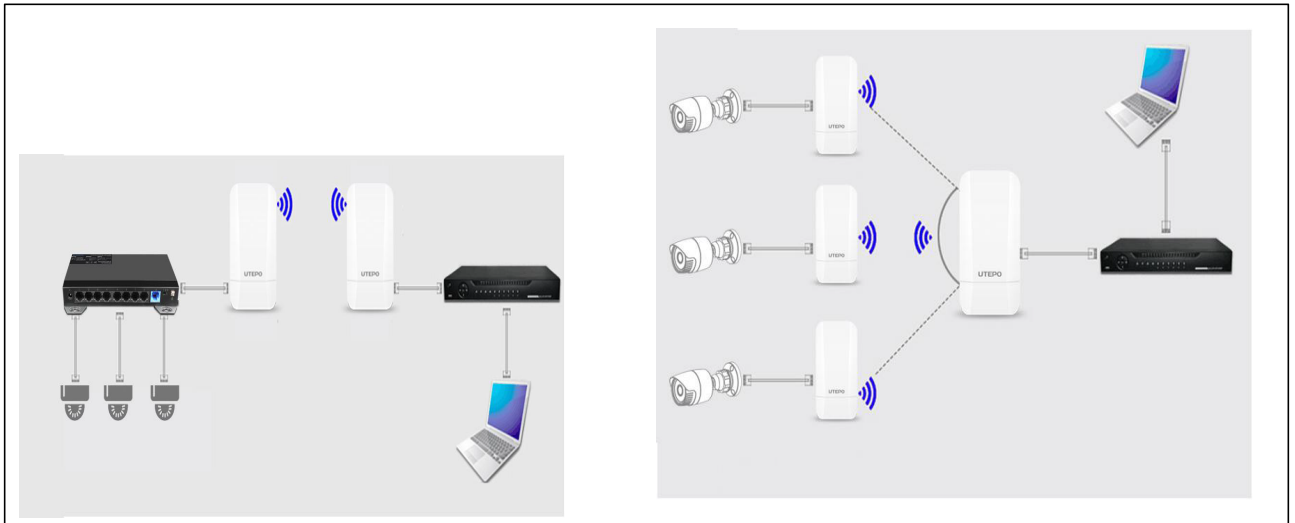


- ③ 5GHz, low interference, up to 3km wireless transmission distance.
- ③ 900M, built-in 12dBi dual-polarized directional antenna.
- ③ Equipped with IP65 protection enclosure.
- ③ Support WEB and cloud management.

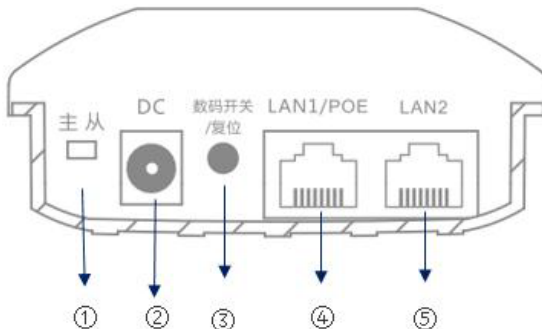
Overview

The CP5-900 is a 5.8GHz 900M long-distance wireless transmission device, with 11n wireless technology. Unique digital matching technology, it is easy to complete matching of point-to-point, point to multipoint without computer configuration. Equipped with industrial waterproof housing, it adapts to the outdoor harsh environment. And it is easy to be installed with the built-in 12dBi antenna. What' s more, it enhances the performance and stability of wireless transmission and is widely used in medium and short distance video transmission and data transmission within elevator, scenic spot, factory, & dock etc.

Application



Board Diagram



- ① Master Dial Switch
- ② DC Power Input Port
- ③ Digital Switch / Reset
- ④ PoE Port
- ⑤ LAN Port

Specification

Model	CP5-900
Main Chip	MTK7620DA+7162E Processor
Transmission Rate	900Mbps
Protocol	802.11a/n/an/ac
Memory	64MB DDR3
Flash	8MB
Antenna	Built-in 12dBi directional antenna with dual polarization Horizontal angle: 60 degree, vertical angle: 60 degree.
Modulation Mode	OFDM = BPSK,QPSK,16-QAM,64-QAM;DSSS = DBPSK,DQPSK,CCK
Operating Frequency	5.1GHz~5.8GHz
Receiving Sensitivity	11a: -72dbm@54Mbps, -88dbm@6Mbps 11ac: -66.5dbm@MCS7, -83dbm@MCS0
Transmission Distance	3Km
Network Port	1*10/100 Mbps adaptive network port , 1*10/100/1000 Mbps adaptive network port
Button	1*Digital Switch / Reset , Value 1 added by short pressing, reset by pressing in 15s.
LED Indicator	SIG, ETH, PWR, DIGITAL
Power	Non-standard PoE: 24V 0.5A DC 12V 1A, power consumption < 10W
Power Consumption	< 10W
Operating Environment	Temperature: -30°C ~ +55°C (Operation), -40°C ~ +70°C (Storage) Humidity (Non-condensing): 10% ~ 90% (Operation), 5% ~ 95%(Storage)
Dimension	260mm×90mm×37mm
Software	
Operating Mode	Master AP, Slave AP (Through dial switch)
Networking Mode	Point to Point, Point to multipoint (Within 8 points)
Management	WEB
Network	Bridge: Static IP/ Dynamic IP Gateway: Static IP/ Dynamic IP/ PPPoE
Operating Channel	5G : 36、40、44、48、52、56、60、64、149、153、157、161、182、186、190、194

Specification

Bridge Management	Binding with cloud account, support remote management
Wireless Management	Bridge configuration, advanced configuration, WIFI configuration
System	Time/ Date Setting, Username Management, Backup/ Restore, Reboot/ Time to Reboot
Update	Local update based on WEB/ Online update

Packing List

CONTENT	QTY
CPE	1
POE Power Supply	1
Mounting Kits	1
Cable	1
User Manual	1

Related Product

NAME	MODEL
2.4G 300M Elevator Exclusive CPE	CP2-300
5.8G 300M Security Exclusive Outdoor CPE	CP5-300